

Overview

User Segment

Problem Framing

Solution Prioritization

Redesign Outlook

User Experience

Metrics & Pitfalls

What's brewing in the dating industry?

Market Landscape



Global online dating market worth ~\$6–11B (2024); **CAGR 7.4%** till 2030

300M+ global users; **India** ~26M users and rising. (5th largest dating economy)



Cultural stigma and norms prevalent

Verification and safety nudges



Many matches but few meaningful conversations and conversions

About Bumble



Bumble is a dating and networking platform with women as drivers of the relationship. The platform enables people to build healthy and equitable relationships through different kinds of connections with women making the first move.

Revenue Model



Freemium Model With Paid Upgrades



Bumble BFF & Bumble Bizz Expansion



Super Swipe, Spotlight, Travel Mode & Backtrack

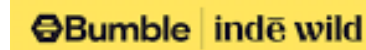
In-App Purchases



Advertising and Sponsored Content



Beeline, Extend and Rematch



Bumble Boost & Bumble Premium

Events & Brand Collaborations

Market Statistics of Bumble (FY2024)

Total Revenue Increased 2% to \$1,071.6 Million



26% market share



Google Play Store Rating - 4.1



Total Paying Users increased 11.5% to 4.1 mn



72% users under 35



50 million active users



3:1 Male-Female ratio, 46.2% of users are female



Total ARPPU decreased to \$21.23



2nd largest dating app



Actors Involved

Anyone above the age of 18 can create a Bumble profile for free and connect with people around them.

Initiator



Responder



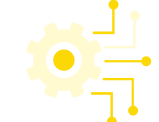
Scammers



Match Engine



Nudge System



Peer Network



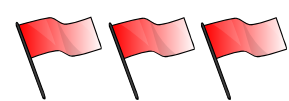
Existing Apps

App	Noteworthy Features
Hinge	Prompt-based profiles; "Your Turn" nudges
Tinder	Fast matching; simple messaging; "Share My Date" safety
OkCupid	Compatibility quiz-based matching
happn	Location-based "crossed paths" matches
Pure	Anonymous, instant chats
Match	Long-form profiles; traditional messaging
Knot Dating	Values alignment + intentional starters
Bumble	Women-first messaging, light prompts, verification
Breeze	Skip chat: match only → share availability → date booked



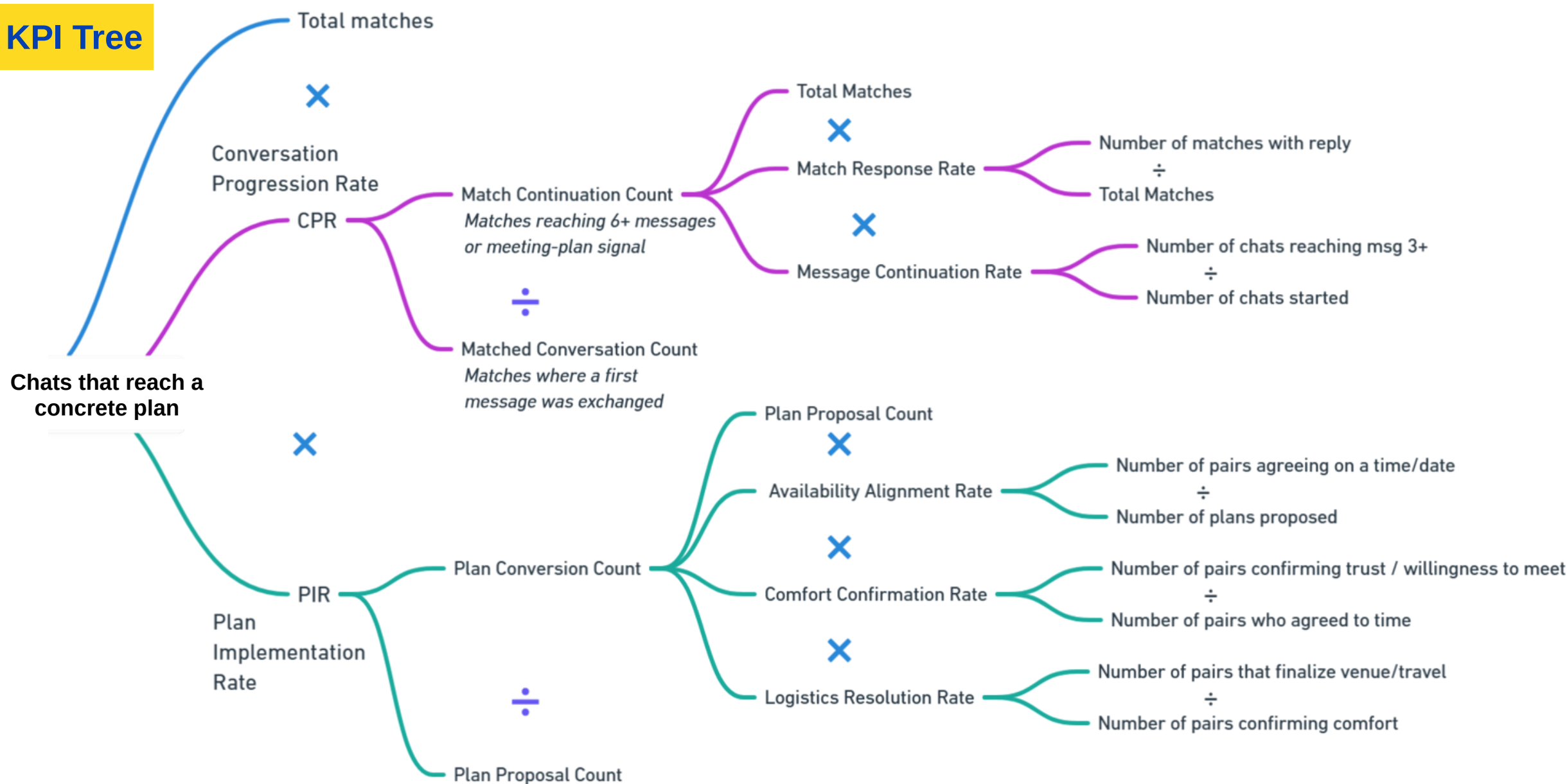
[Detailed Competitive Analysis](#)

Where is Bumble lacking?



Despite a strong start (first message sent within 24 hours of matching), many chats stall after ~2 exchanges and never progress to a concrete meet plan. As a result, promising matches die in the “small-talk valley,” reducing user satisfaction, word-of-mouth, and subscription willingness.

KPI Tree



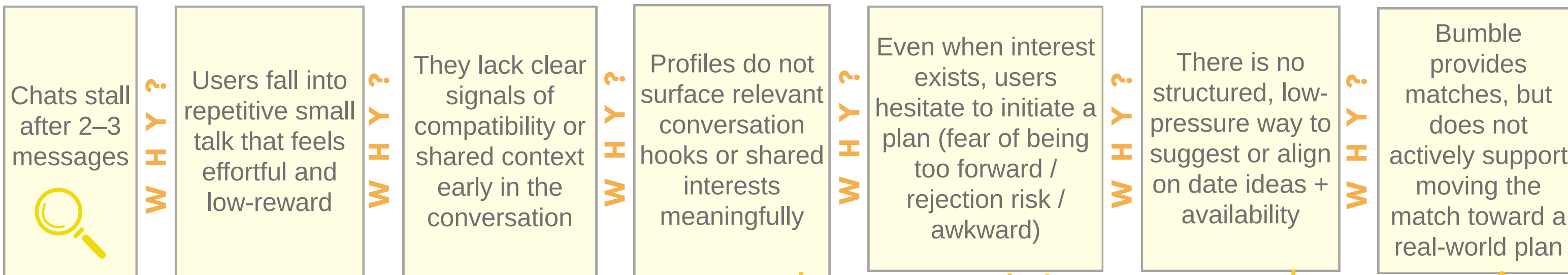
Business Outcome

Increase the % of chats that move from early small talk to a concrete meet plan. This matters because when users see real progress, they return more, are more willing to pay, and recommend the app — meaning date conversion is the core emotional and economic value of Bumble.

Product Outcome

- To drive the business outcome we will have to increase
- Match Response Likelihood
 - **Message Continuation Likelihood**
 - **Plan Suggestion Initiation & Acceptance Likelihood**
 - Availability Sharing Likelihood
 - Scheduling Completion Likelihood

Root Cause Analysis of the Problem



Overview



User Segment



Problem Framing



Solution Prioritization



Redesign Outlook



User Experience



Metrics & Pitfalls



Overview



User Segment



Problem Framing



Solution Prioritization



Redesign Outlook



User Experience



Metrics & Pitfalls

Who is facing the problem?

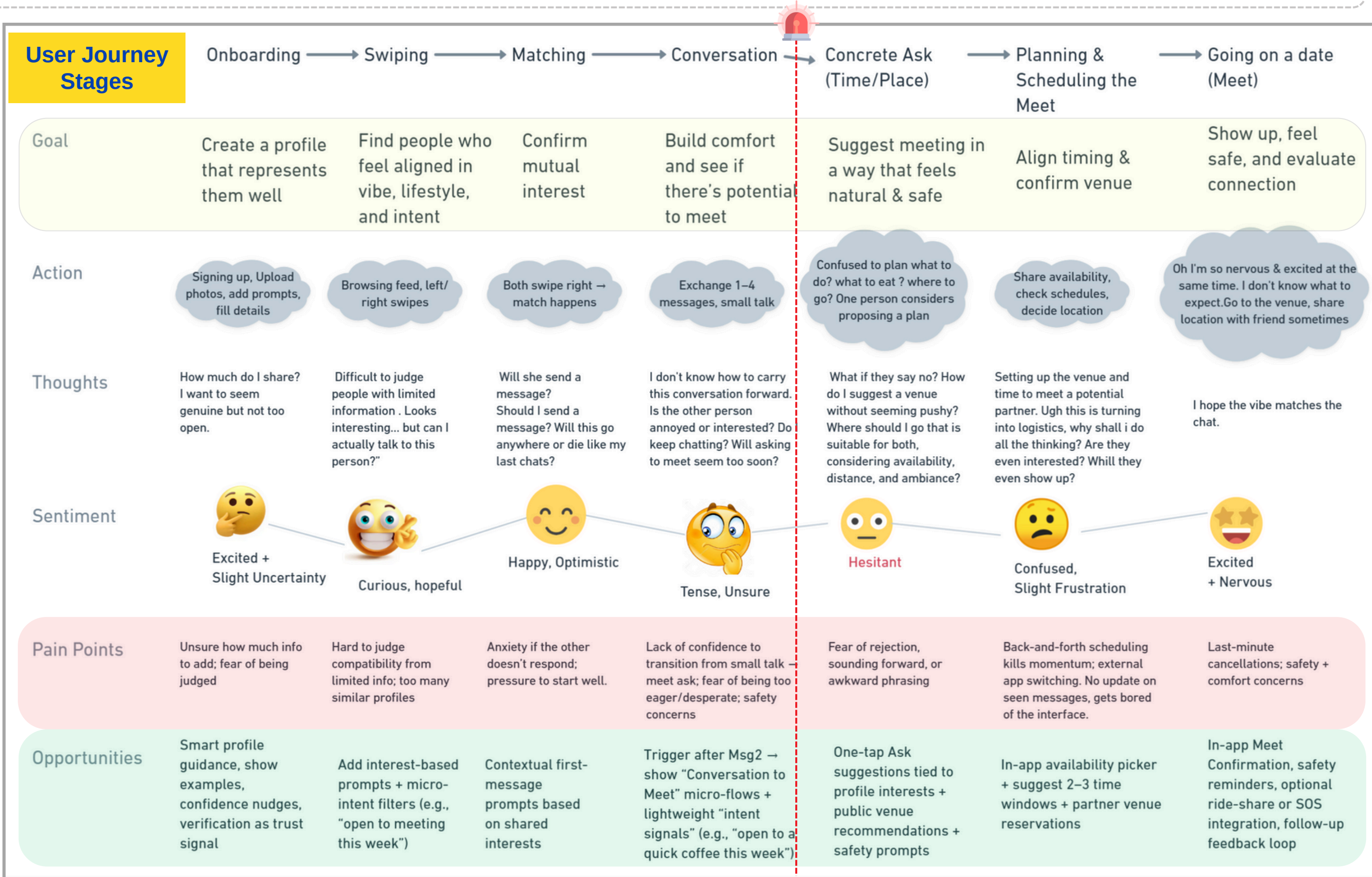


Urban, working professionals (ages 22–30) who: Are serious about forming meaningful relationships (not casual flings), Have limited time due to work/school commitments, Are comfortable starting conversations but struggle to transition from small talk to planning a meet, for the fear of feeling awkward. Want efficiency, clarity, and emotional safety before agreeing to a date.

Hypothesis

H1	Behavioral : Users don't know how to transition
H2	Perception : Users need clarity of mutual intent
H3	Usability : Scheduling is tedious in chat
H4	Emotional Safety : Users fear suggesting wrong date format
H5	Trust / Safety : Women need confidence & control in planning
H6	Engagement : Shared interest not surfaced early

User Journey Stages





Overview



User Segment



Problem Framing



Solution Prioritization



Redesign Outlook



User Experience



Metrics & Pitfalls

User Persona

Young Busy Professionals Serious About Developing A Relationship, currently using dating apps

The Open-Yet-Guarded Dater

Behavior

Matches + chats easily, but rarely meets offline. Waits for trust signals. Screens profiles based on vibe + values, not just looks.

Goals

Form a genuine connection that feels emotionally safe and mutually invested. Have low-pressure meets in familiar, public spaces.

Needs

Mutual interest cues. Comfort-first date suggestions. Meaningful conversation, not repetitive icebreakers.

Pain Points

Unsure when to suggest meeting, fears being judged if she initiates, and chats stall because both wait for the other. Scheduling feels awkward and tiring.

Traits

Values emotional safety, trust, and clarity. Reflective, selective, thoughtful communicator.

Ananya, 25 | Bangalore
Product Designer



Bumble + Hinge User

JTBD : "Help me feel safe, confident, and mutually aligned when moving from chatting to meeting, so I don't let good matches fade."

The Earnest but Uncertain Initiator

Behavior

Starts strong, friendly, and responsive. Stuck in small-talk loops; hesitant to move things forward. Chats drag on without plans, gets frustrated.

Goals

Turn matches into real-life meets, not endless texting. Show personality without oversharing.

Needs

Clear cues the other person is open to meeting. Light structure to move from convo → shared interests → plan. Low-friction scheduling inside the app.

Pain Points

Unsure of the "right moment", waits too long, spark fades. Afraid of seeming pushy. Planning logistics in chat feels awkward.

Traits

Respectful, thoughtful, earnest. Values clarity; hates ambiguity. Gets discouraged when chats just die out.

Rohit, 29 | Gurgaon
Senior Analyst



Bumble Loyal user

JTBD : "Help me confidently progress from small talk to a concrete meet without risking awkwardness or overstepping boundaries."

Empathy Map

SAYS

"I want something real, not endless texting."
"I don't want to come off too eager."
"I'll ask to meet when it feels right."

"If I ask too soon, it'll seem pushy; if I wait, the spark might die." "I need clear interest before I take the next step." "Why do good chats fade for no reason?"

THINKS

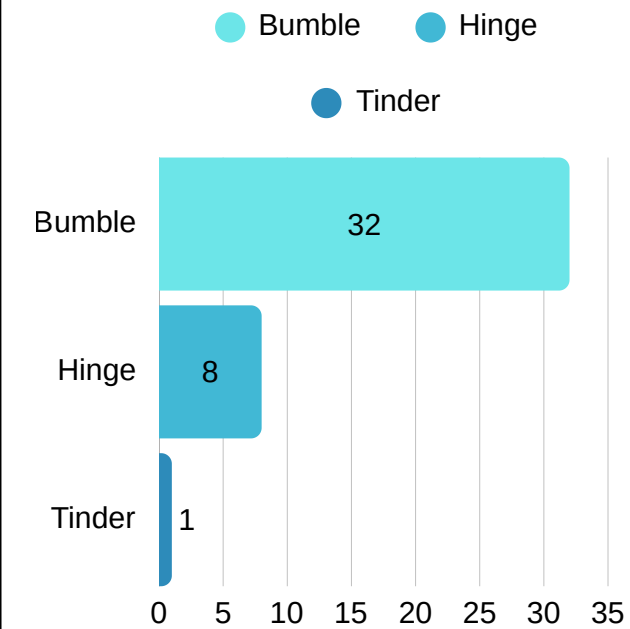
DOES

Chats warmly but stays in small talk too long. Waits for cues before suggesting a date. Lets conversations drag without a clear next step.

Hopeful when conversation flows, anxious when progression stalls. Tired of emotional effort with no real outcome. Protective of boundaries; needs safety, clarity. Frustrated when the connection almost happens but never becomes real.

FEELS

Insights



[Survey Form](#)

[40+ Responses](#)

- 30% do not know how to move past small talk
- 20% feel conversation loses the vibe
- 50% feel underconfident while proposing a plan to meet without context
- >20% feel asking out is awkward
- 30% feel small talk drag is a blocker but don't have any other option
- 74% wait for the other person to take initiative
- >50% would be interested if small talk can be replaced with more natural convo

Vibes, interests, safety, meaningful conversations all play an important part while deciding to meet



iamAliveeee • 17d ago

Depends on the person and comfort level!

↑ 2 ↓ Reply Award Share ...



Thegirlwithabirdtat • 17d ago

3-4 days messaging then ask. Example: if you match on Monday, talk all of Monday-Wednesday why wouldn't you ask if they are available that weekend? I feel like it's a waste of time messaging for 2+ weeks then finally meeting and realizing you aren't compatible

↑ 2 ↓ Reply Award Share ...



mreguyincognito • 2y ago

"Hi how are you?" is boring and you don't stand out from anyone else. Try a funny pick up line and you either get crickets or "does that ever work for you?" Ask too many questions and its an interview. Dont ask enough questions and you're clearly not interested.



rockhardcatdick • 2y ago

I average 1 match a month. If I do too much small talk then they'll unmatched. If I try to ask them out too soon they'll unmatched. With so few matches that's a lot of pressure and not a lot of opportunities to practice small talk.

Source: Reddit



Overview



User Segment



Problem Framing



Solution Prioritization



Redesign Outlook



User Experience



Metrics & Pitfalls



Problem Framing Canvas



Vision: Enable young adults to form real, emotionally safe connections.
Make moving from match → date feel easy, safe, and natural.



What is the true problem?

Users struggle to move from “**initial match and friendly small talk**” to a meaningful plan or connection because the app does not provide structure, shared context, or guided momentum in conversations.
So matches feel **replaceable**, chats **stagnate**, and emotional investment stays **low**.



Who are the users facing the problem?

Urban Gen Z & Young Millennials (22–30) who:

- Want **meaningful dating**, not just casual swiping
- Value emotional comfort, clarity, and respectful pacing
- Avoid initiating because of **fear of misreading** interest
- Are intentional in dating, but get stuck at “what next?”



How do we know it's a real problem?

- High drop-off after 2–4 messages across dating apps. Users report fear of appearing **too eager**, both wait and chat dies.
- Feedback shows **desire for shared context**, low-pressure cues, not more matches.
- Competitive apps testing conversation scaffolds (Hinge, IRL dating apps) — signal market shift.



What Value is Generated by Solving This Problem?



For Users

- **Smooth progression** from chat to plan to meet.
- **Clear signals** of mutual interest → less overthinking.
- Reduced emotional effort from chats that go nowhere.
- Safer, low-pressure meet suggestions inside the app.

Outcome: *Confident, comfortable movement toward real connection.*

For Business

- Higher match → date conversion → stronger success perception.
- Increased user satisfaction → better retention & word-of-mouth. (NPS)
- Greater willingness to try Premium boosts & features.
- Differentiates Bumble as the app that **leads to real outcomes**, not just chats.



Why Should We Solve This Problem Now?

- **Dating culture has shifted** — people want fewer, deeper, emotionally safe connections, not endless swiping.
- Yet current experience leads to stalling, hesitation, and emotional fatigue.
- If Bumble doesn't solve the “small-talk valley,” **users feel dating is work, not joy — and leave.**



Overview



User Segment



Problem Framing



Solution Prioritization



Redesign Outlook



User Experience



Metrics & Pitfalls



Ideating the best add-ons to Bumble for the problems faced by our target users



Solution 1 : Spark Cards

Solution 2 : Date Shuffle

Solution 3 : Trust Circles

About

Guided Micro-Conversation Prompts
A lightweight conversation layer inside the chat that surfaces context-aware prompts based on shared interests, profile cues, and conversation tone. Instead of random questions, Spark Cards help the match discover shared intention quickly.

A one-click shared date idea generator inside the chat that uses interest overlap + location + budget to suggest 3 possible meet-plans. Both users can Shuffle until they agree.

A minimal social credibility layer where friends can leave one-line “vibe testimonials” on your Bumble profile—similar to a LinkedIn recommendation, but for personality.

Key Features

- 3–5 tappable prompt cards appear before messaging starts
- Prompts adapt to profiles (e.g., “Travel lovers → best road trip story”)
- Option to choose a “Date Direction Card” (e.g., Food date, Walk date, Event date)
- Encourages emotional signaling (“What kind of vibe are you looking for?”)

- Set budget slider
- Auto-pulls nearby safe public places
- Adds a fun twist each time (e.g., “2 truths & a lie while walking”)
- One tap to send → converts into a “Add to Chat Plan” card

- Friends verify: “They show up”, “Good listener”, “Fun date energy”
- Can optionally show one voice-note endorsement (30 sec max)
- Shown only after matching (helps comfort & reduces ghosting)
- In Chat: “What friends say about them” card preview

Why This Solution?

Spark Cards tackles the core breakdown point: the early chat stall where neither person knows how to deepen the conversation without being awkward or over-investing.

- It removes cognitive load → no one needs to think of “what to say next”
- It creates **shared context**, which is the **missing ingredient** in chats that die
- It signals mutual interest through tiny actions (micro-investment)
- It reduces fear of overstepping because the app is guiding tone + depth.

This solution addresses the transition from chatting → meeting, where hesitation, overthinking, and logistics kill momentum.

- It **removes the burden of planning**, which is a major anxiety point
- It keeps momentum going right at the point where conversations typically fade
- It feels fun and low-pressure, aligning with Indian dating cultural comfort needs
- It allows users to suggest a plan without fear of being too forward.

Users get a clear, gentle path to meet. More matches convert to real-life interaction. Emotional labor of planning is shifted from user → product

People **commit faster when they trust the person**.

- Helps cautious users move from chat → meet without anxiety.
- The primary emotional blocker for offline meet is **safety + trust uncertainty**, especially for women.
- It reduces perceived risk without needing deep personal disclosure
- Social proof validates authenticity, making initiating the meet feel safer
- Reinforces Bumble’s brand position: kind, respectful, women-first dating. Users feel emotionally and physically safer.

Solutions	Impact (I)	Confidence (C)	Usability Risk (U)	User Value Risk (V)	Business Risk (B)	SCORE (I*C / U*V*B)
Spark Cards	Mid (2)	High (3)	Low (1)	Low (1)	Low (1)	6.0
Date Shuffle	High (3)	Mid (2)	Low (1)	Mid (2)	Low (1)	3.0
Trust Circles	High (3)	Low (1)	Mid (2)	Low (1)	High (3)	0.5

[Calculation Justification](#)



Overview

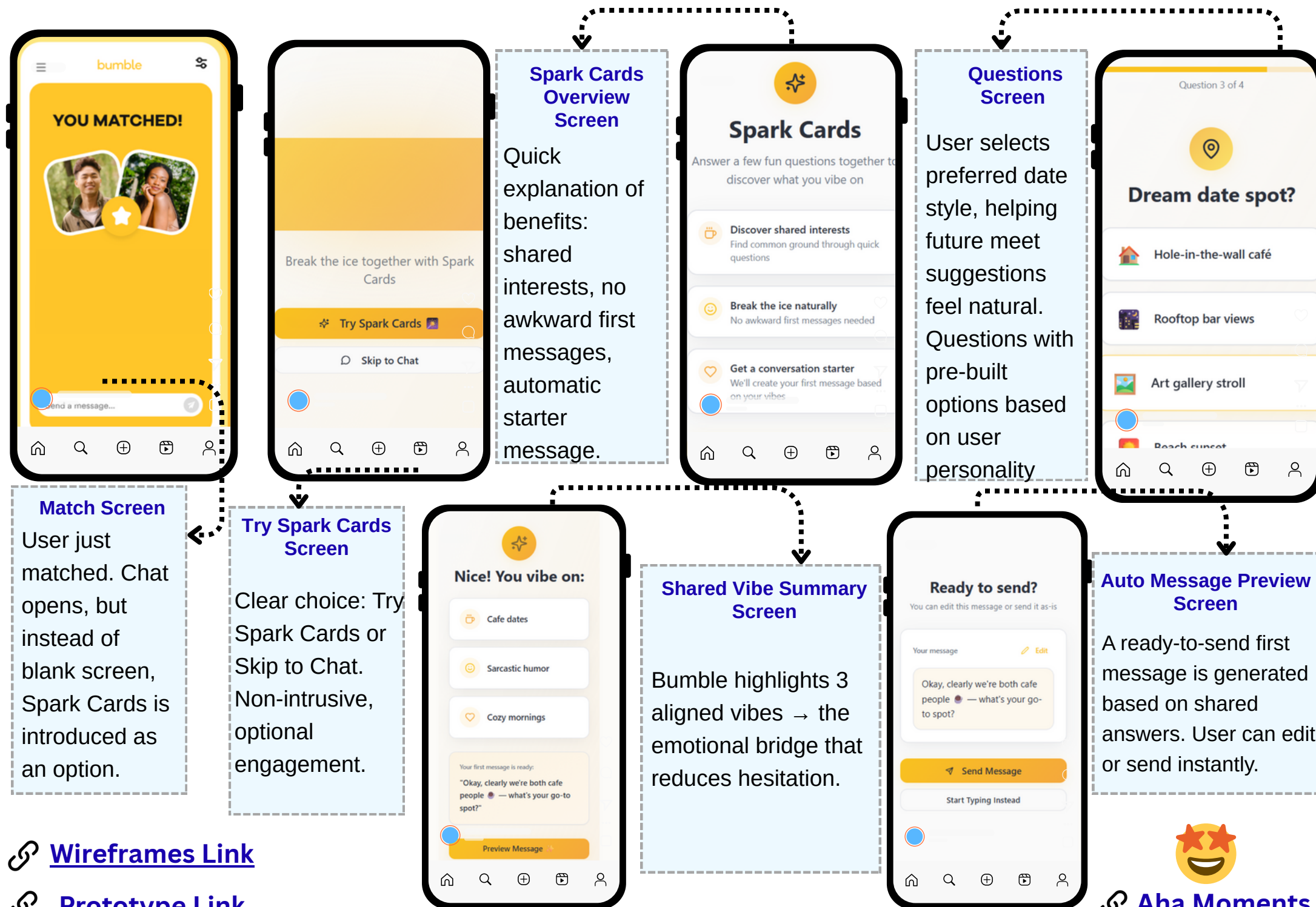


Spark Cards work because they don't just start the chat — they sustain it. They transform messaging from effortful conversation into shared play, which builds trust faster and makes meeting feel natural, not forced, similar to the days of courtship where a person gets to know the other person slowly but effectively.

How Will Spark Cards in Bumble Look Like?

The current Question Game: Needs manual initiation → low usage, High-effort + early in chat → feels heavy, Prompts are generic → not based on shared interests, Doesn't move the chat toward a meet. **We start by solving the problem of reducing drop offs due to the small talk valley.**

Result: It feels like homework, not momentum.



[Wireframes Link](#)

[Prototypes Link](#)

Aha Moments

What Features to Inculcate? (MoSCoW)

Category	Feature	Description
M (Must Have)	Auto-Spark Suggestions	Auto surface card prompts based on profile + convo stage.
	One-Tap Send Cards	No typing; tap to drop into chat.
	Shared Reveal Response	Reveal after both answers to build spark.
S (Should Have)	Tone Selector	Choose vibe: playful / flirty / thoughtful.
	Conversation Progress Nudges	Subtle nudge toward planning a meet.
C (Could Have)	Shared Playlist / Mood Link	Suggests a song vibe card to build emotional connection.
	Local Date Inspiration Teaser	Suggests safe, low-pressure nearby meet ideas.
W (Won't Have)	Forced Expiry / Punishment	No reply timers or pressure tactics — keeps it safe and relaxed.
	Public Sharing / Comments	No social exposure or comparison layer.



User Segment



Problem Framing



Solution Prioritization



Redesign Outlook



User Experience



Metrics & Pitfalls



Overview



User Segment



Problem Framing



Solution Prioritization



Redesign Outlook

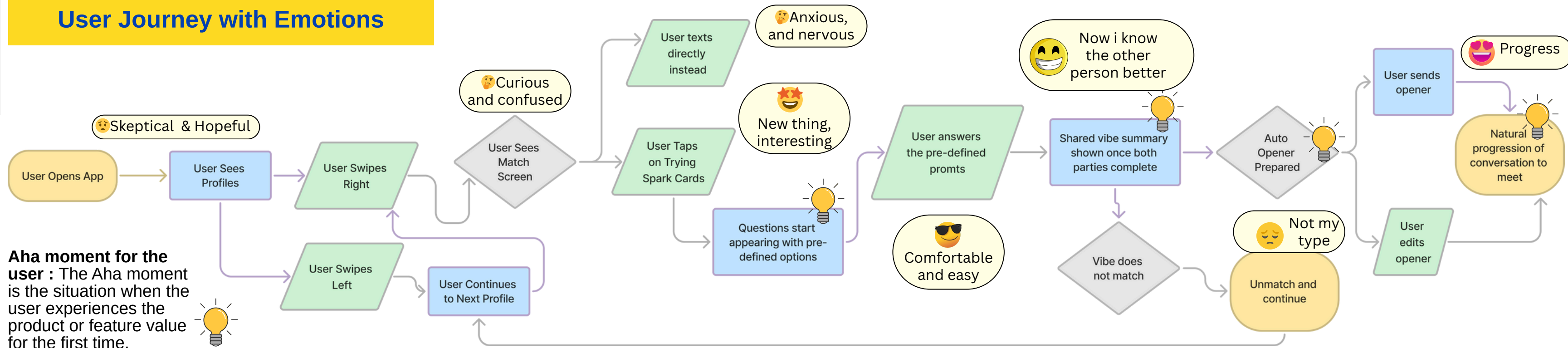


User Experience



Metrics & Pitfalls

User Journey with Emotions



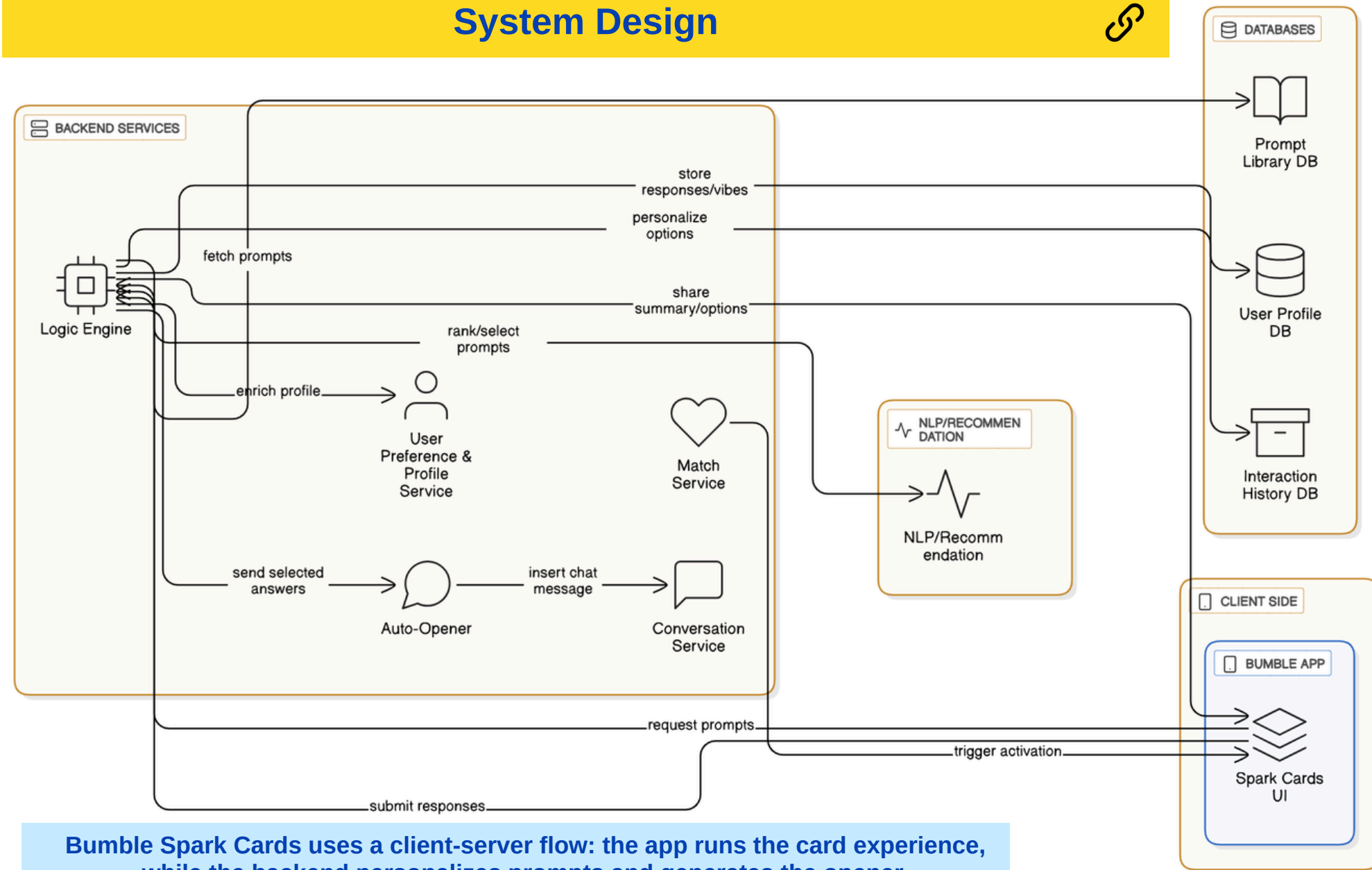
Aha moment for the user : The Aha moment is the situation when the user experiences the product or feature value for the first time.



A/B Testing Plan

Element Being Tested	Control (A)	Variant (B)	Hypothesis
Match → Chat Screen	Blank chat opens after match; user must start message manually.	Chat opens with Spark Cards CTA visible above input bar.	Showing Spark Cards at match moment lowers "first message anxiety" → more users start chatting.
Conversation Starter Flow	No guided flow; users rely on free-text small talk.	Users answer 3 Spark Card prompts, then see Shared Vibe Summary.	Guided shared context will reduce awkwardness → chats last longer before stalling.
First Message Send	User must write the first message themselves.	Auto-generated first message based on shared answers; user can edit/send instantly.	Removing effort from first message → more chats progress to meaningful exchange.

System Design



Bumble Spark Cards uses a client-server flow: the app runs the card experience, while the backend personalizes prompts and generates the opener.



Overview



User Segment



Problem Framing



Solution Prioritization



Redesign Outlook



User Experience



Metrics & Pitfalls

How to Measure Success?

To ensure Bumble is not just a place where people match and chat, but a platform where real, meaningful offline connections actually happen. So we start by **solving the problem of reducing drop offs due to the small talk valley.**

Match to Date Progression Rate



(Match to Chat)
X
(Chat to Active)
X
(Active to Meet)

North-Star Metric

Spark Cards Adoption Rate :
Measures whether users choose Spark Cards instead of default chat.

Conversation Momentum Rate : Measures whether Spark Cards actually gets chats moving past small talk.

Meet Intent Formation Rate :
Measures whether chats shift from "fun conversation" to "real-world planning."

L1 Metrics

Spark Cards View Rate
Did users see the prompt?
(# match screens where Spark Cards module was visible) / (Total match screens)

Time to First Message (lower is better)
Did Spark Cards speed up first reply? Avg. minutes from match → first user message

Shared Vibe Summary View Duration (Users actually felt alignment)
Avg. time spent viewing Shared Vibe Summary

Spark Cards Tap-Through Rate
Did users click Try Spark Cards?
(# Spark Cards CTAs tapped) / (# Spark Cards CTAs seen)

Auto-Opener Send Rate
Are users sending the Spark auto-intro message?
(# auto-openers sent) / (# Spark Card completions)

"Meet" Language Signal Rate (Users began hinting toward meeting)
= (# chats containing meet-intent phrases) / (Total chats)

Spark Cards Completion Rate
Did they finish the mini-flow?
(# Spark Card sessions completed) / (# Spark Card sessions started)

Stall Drop-Off Rate (lower is better)
Did chats avoid dying after 1-2 messages? (# chats ending ≤2 messages) / (Total chats)

Date Suggestion CTA Tap Rate (Users explicitly clicked Suggest a Meet)
(# meet CTA taps) / (# chats where CTA was displayed)

L2 Metrics

Match to Date (Concrete Plan) Progression rate

= F(Cards Adoption, Conversation Momentum, Meet Intent Formation)

Guardrail Metrics:



Safety Report Rate: Psychological & physical safety
(# safety reports) / (Total chats or matches) If meet-intent is pushed too hard, discomfort or harassment can increase.

Unmatch Rate within 1st 24h Interaction quality & mutual interest:
(# unmatches within 24h) / (Total matches)

Block Rate: User comfort & choice - (# blocks) / (Total matches)
Ensures nudging toward real-world plans doesn't feel forced or creepy.

Risks and Mitigation

Risk / Pitfall	Mitigation Strategy
Forced Vulnerability – Spark Cards may feel too intimate too soon , making users (especially women) feel pushed into sharing personal preferences early. <i>(Value + Safety Risk)</i>	User-Controlled Depth: Keep prompts lightweight by default, with optional "deeper" prompts unlocked only after mutual interaction. Make every step opt-in and <i>never</i> timed or nudged aggressively.
Template Conversations – If too many users use the same auto-openers, chats may feel generic and unnatural , reducing emotional authenticity. <i>(Experience Risk)</i>	High Prompt Variability + Context Personalization: Rotate prompt sets weekly, personalize auto-openers based on <i>profile fields</i> & shared interests, and allow 1-tap customization so messages feel user-owned.
Feature Abandonment – Users may try Spark Cards once, but not return , seeing it as a one-time novelty instead of a repeat-value experience. <i>(Adoption + Retention Risk)</i>	Trigger Repeat Use Moments: Surface Spark Cards again when conversation lulls are detected (e.g., >3days silence), positioning it as a <i>momentum booster</i> , not just a first-message tool.
Meet-Intent Pressure – Progression cues could make users feel rushed toward meeting offline , which can reduce trust and increase unmatches. <i>(Safety & Consent Risk)</i>	Gentle Language + Mutual Confirmation: All meet-intent CTAs must use soft framing ("If you're vibing, maybe grab coffee?"). Show Meet Suggestion only when <i>both</i> users show conversational engagement.
Unintended Bias Reinforcement – Shared vibe matches may unintentionally overcluster people based on narrow preferences , reducing exposure to diverse matches. <i>(Algorithmic Bias Risk)</i>	Diversity Guardrails: Ensure prompt answers widen—not reduce—match range. Periodically introduce "new vibe discovery prompts" to <i>expand</i> compatibility, not just reinforce similarity.

Future Considerations

- Context-Aware Prompt Sets :** Prompts adapt to profile signals & shared interests to feel personal.
- Soft Meet Suggestions :** Suggest low-pressure date ideas when vibes align (no push).
- Shared Music / Routine Cues:** Light prompts (e.g., "How do you take your coffee?") to deepen familiarity.
- Re-Engagement Nudges :** Gentle prompts to restart chats if conversation slows.



Spark Cards isn't just about making conversations smoother — it reduces the emotional distance between two people at the first interaction, and creates a shared narrative that makes taking the step from match → concrete conversation feel mutual, and genuinely exciting